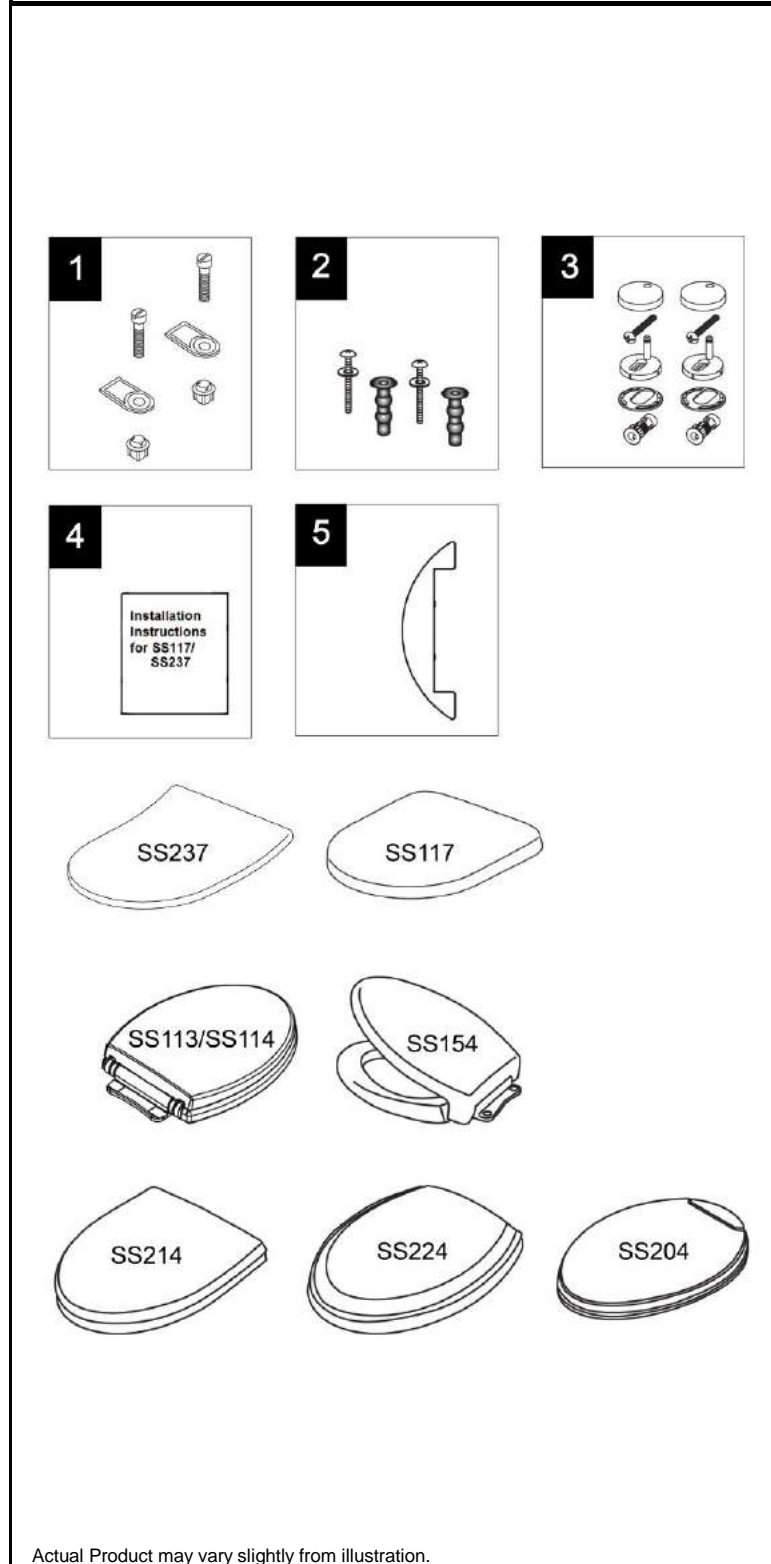


# SS113, SS114, SS117, SS154, SS204, SS214, SS224 & SS237

SS113                      SS204  
 SS114                      SS214  
 SS117                      SS224  
 SS154                      SS237

SoftClose® Seats



Item	Part	Description
1	THU689	Under Mounting Hardware Set
2	THU651N	Top Mounting Seat Hardware
3	THU726	Mounting Hardware for SS117/SS237
4	0GU085	Installation Instructions for SS117/SS237
5	THU722#01	Back Cover Plate - Cotton for SS204
	THU722#03	Back Cover Plate - Bone for SS204
	THU722#11	Back Cover Plate - Colonial White for SS204
	THU722#12	Back Cover Plate - Sedona Beige for SS204
	THU722#51	Back Cover Plate - Ebony for SS204

**Note:**

THU651N is included with skirted toilets and is sold as a separate item. It is not included with seats.  
 THU722 is sold for SS204 seats only.

**Product Number Explanations**

Seats	Seats	Colors
(SS) SoftClose® Seat	(SS) SoftClose® Seat	(#01) Cotton
(113) Round Model	(204) Elongated	(#03) Bone
(114) Elongated Model	Oval Model	(#11) Colonial White
(117) D-Shape Model	(214) Elongated	(#12) Sedona Beige
(154) Elongated Traditional Model	Sorée Model	(#51) Ebony
(227) D-Shape MH Slim	(224) Elongated	
	Guinevere Model	

Actual Product may vary slightly from illustration.