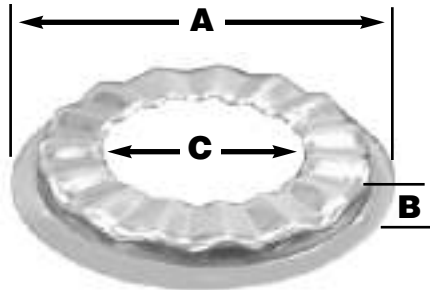


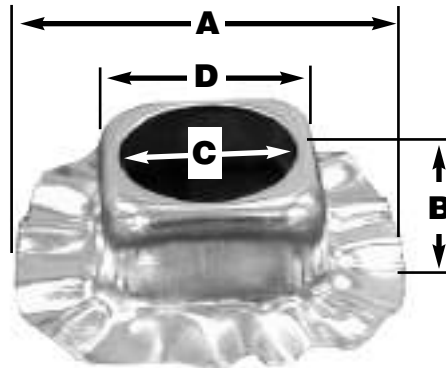
# SPECIFICATION SUBMITTAL SHEET

jones stephens corporation

## ROSETTES



B10-110



B10-111

**PART NO.(S):**

**B10-110, B10-111**

**features and benefits:**

- CARTON QUANTITIES ONLY

This product and others like it can be found in the Jones Stephens catalog. Call today to order your catalog or download it from our website: [www.plumbest.com](http://www.plumbest.com)

PART NO.	DESCRIPTION	A	B	C	D
<input type="checkbox"/> B10-110	Shallow pattern (zinc plated)	15/8"	1/8"	7/8"	—
<input type="checkbox"/> B10-111	Deep pattern (zinc plated)	113/16"	5/8"	7/8"	1"

jones stephens corporation  
 3249 moody parkway • moody, alabama 35004  
 toll free phone: 1-800-355-6637 • toll free fax: 1-800-462-6991  
[www.plumbest.com](http://www.plumbest.com)