

# 150# Malleable Fittings • Spec Sheet

## CHINESE

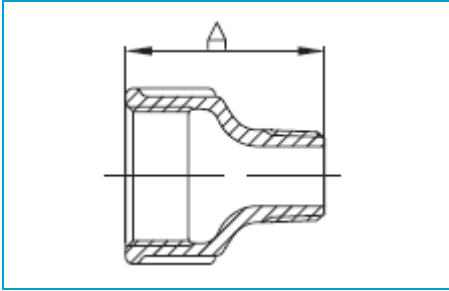


- Black & Galvanized
- Material: ASTM A197/A197M
- Dimensions:
  - ASME B16.3 covering 90° Elbows, 45° Elbows, Couplings, Reducers, 90° Street Elbows, 45° Street Elbows, Caps, Tees
  - ASME B16.39 covering Unions
  - ASME B16.14 covering Bushings, Plugs
- Threads: ASME B1.201
- Available: 1/8" through 6"
- Approvals: UL & FM approved

# 150# Malleable Fittings • Spec Sheet

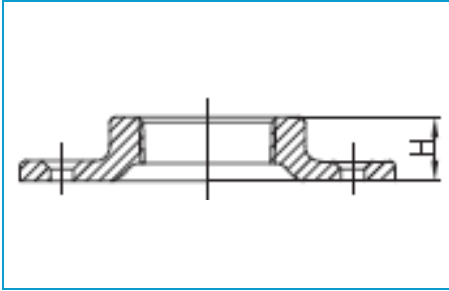
## CHINESE

**Extension Piece**



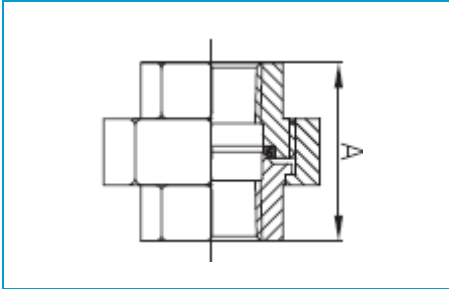
Size	1/2	3/4
A	1.69	1.89

**Floor Flange**



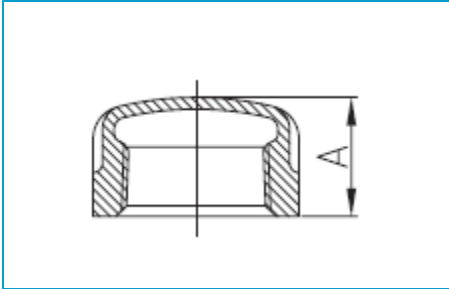
Size	1/4	3/8	1/2	3/4	1
H	0.47	0.55	0.55	0.63	0.67
Size	1-1/4	1-1/2	2		
H	0.75	0.87	0.99		

**Union**



Size	1/8	1/4	3/8	1/2	3/4	1
A	1.26	1.44	1.62	1.71	1.95	2.07
Size	1-1/4	1-1/2	2	2-1/2	3	4
A	2.27	2.40	2.76	3.23	3.51	3.86

**Cap**



Size	1/8	1/4	3/8	1/2	3/4	1	1-1/4
A	0.53	0.63	0.74	0.87	0.97	1.16	1.28
Size	1-1/2	2	2-1/2	3	4	5	6
A	1.33	1.45	1.70	1.80	2.08	2.32	2.55