



Model AG

Air Gap Adaptor Fitting

Application

Designed for use with ZURN WILKINS Reduced Pressure Principle Backflow Preventers on horizontal or vertical installations. Device is necessary when installing a drain line and can be mounted to the body. (Drain line can be any standard piping material.)

Approvals

ANSI/ASME A 112.1.2

Materials

Body Cast grey iron, epoxy painted
 Body (AG-11, 12) Nylon
 Elbow Cast grey iron, epoxy painted
 Bolts Steel, zinc plated



AG-4 thru AG-8 AG-9 & AG-10 AG-11 & AG-12 AG-13 & AG-14

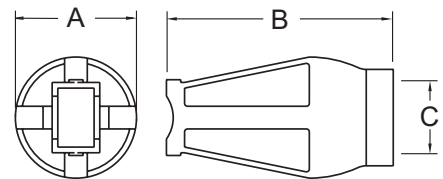
Sizes: 1/4" - 1/2", 3/4" - 1", 1-1/4" - 2", 2-1/2" - 6", 8" - 10"

Dimensions & Weights (do not include pkg.)

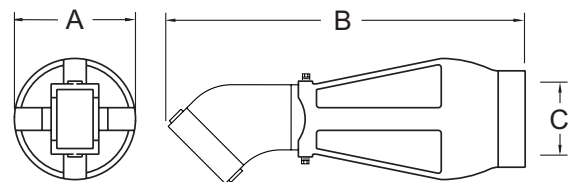
MODEL	DIMENSIONS (approximate)						WEIGHT		
	SIZES	FOR MODEL* SERIES	A		B		C	lbs.	kg
			in.	mm	in.	mm	OUTLET PIPE SIZE		
AG-8	1/4" - 1/2"	975XL, 975XL2	2 1/2	64	3 1/2	89	1" NPT	2	0.9
AG-4	3/4"-1"	975XL, 975XL2	3 1/4	83	5	127	1" NPT	2	0.9
AG-5	1 1/4" - 2"	975XL, 975XL2	4 1/2	114	8	203	2" NPT	3	1.4
AG-6	2 1/2" - 3"	475V	5 3/8	137	10	254	3" NPT	5	2.3
AG-6	2 1/2" - 6"	375, 475	5 3/8	137	10	254	3" NPT	5	2.3
AG-7	8" - 10"	375, 475	7	178	11	279	4" NPT	8	3.6
AG-9	4" - 6"	475V	5 3/8	137	14 1/2	368	3" NPT	9	4
AG-10	8" - 10"	475V	7	178	16 1/2	413	4" NPT	11	5
AG-11	1/2" - 1"	375, 375XL	3 3/4	95	5 1/2	140	2" IPS Slip	1	0.5
AG-12	1 1/4" - 2"	375, 375XL	6 1/2	165	8	200	3" IPS Slip	1	0.5
AG-13	4" - 6"	475ST, 475STV	5 3/8	137	14 1/2	368	3" NPT	9	4
AG-14	8" - 10"	475ST, 475STV	7	178	16 1/2	413	4" NPT	11	5

* Model:

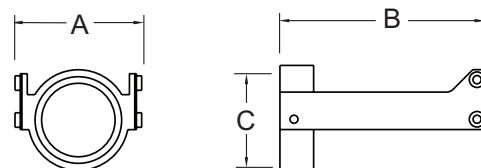
375, 375A, 375ADA, 375ADAR, 375AMS, 375AR, 375AST, 375ASTDA, 375ASTDAR, 375ASTDAST, 375ASTMS, 375ASTR, 375DA, 375MS, 375ST, 375XL, 475, 475DA, 475DAV, 475MS, 475VMS, 975XL, 975XL2, 475ST, 475STV, 475STDA, 475STDAV



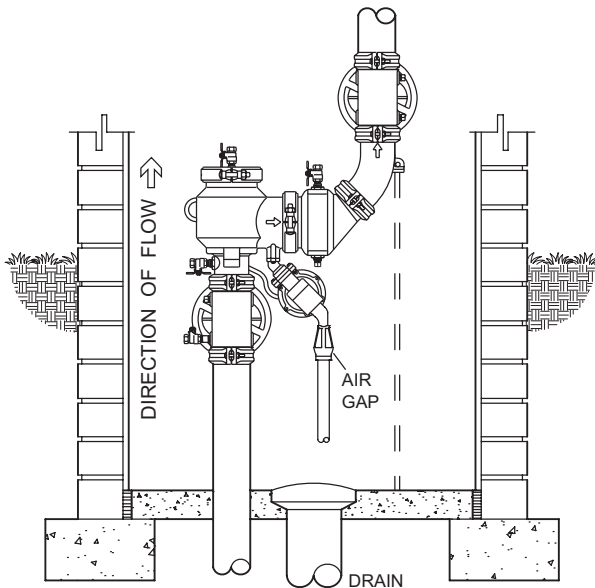
AG-4 THRU AG-8



AG-9 & AG-10



AG-11 & AG-12



Indoor Installation

Typical Installation

Local codes shall govern installation requirements. To be installed in accordance with the manufacturers' instructions and the latest edition of the Uniform Plumbing Code.