

150# Malleable Fittings • Spec Sheet

CHINESE

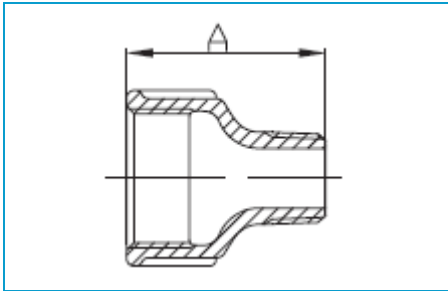


- Black & Galvanized
- Material: ASTM A197/A197M
- Dimensions:
 - ASME B16.3 covering 90° Elbows, 45° Elbows, Couplings, Reducers, 90° Street Elbows, 45° Street Elbows, Caps, Tees
 - ASME B16.39 covering Unions
 - ASME B16.14 covering Bushings, Plugs
- Threads: ASME B1.201
- Available: 1/8" through 6"
- Approvals: UL & FM approved

150# Malleable Fittings • Spec Sheet

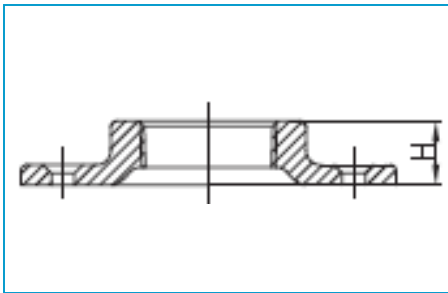
CHINESE

Extension Piece



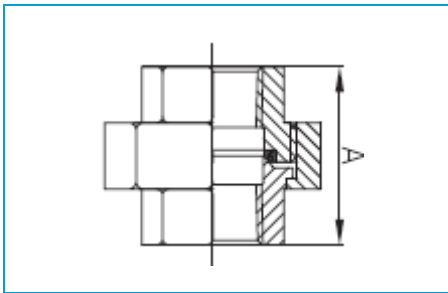
| Size | 1/2 | 3/4 |
|------|------|------|
| A | 1.69 | 1.89 |

Floor Flange



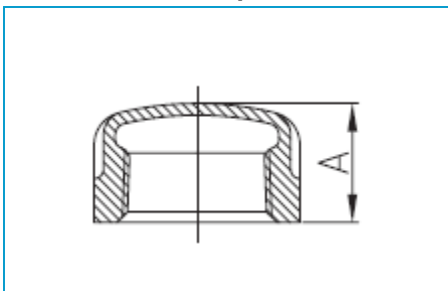
| Size | 1/4 | 3/8 | 1/2 | 3/4 | 1 |
|------|-------|-------|------|------|------|
| H | 0.47 | 0.55 | 0.55 | 0.63 | 0.67 |
| Size | 1-1/4 | 1-1/2 | 2 | | |
| H | 0.75 | 0.87 | 0.99 | | |

Union



| Size | 1/8 | 1/4 | 3/8 | 1/2 | 3/4 | 1 |
|------|-------|-------|------|-------|------|------|
| A | 1.26 | 1.44 | 1.62 | 1.71 | 1.95 | 2.07 |
| Size | 1-1/4 | 1-1/2 | 2 | 2-1/2 | 3 | 4 |
| A | 2.27 | 2.40 | 2.76 | 3.23 | 3.51 | 3.86 |

Cap



| Size | 1/8 | 1/4 | 3/8 | 1/2 | 3/4 | 1 | 1-1/4 |
|------|-------|------|-------|------|------|------|-------|
| A | 0.53 | 0.63 | 0.74 | 0.87 | 0.97 | 1.16 | 1.28 |
| Size | 1-1/2 | 2 | 2-1/2 | 3 | 4 | 5 | 6 |
| A | 1.33 | 1.45 | 1.70 | 1.80 | 2.08 | 2.32 | 2.55 |