

SPECIFICATIONS

FIGURE 571 CARBON STEEL VALVES



150# CARBON STEEL SWING CHECK VALVE

FEATURES

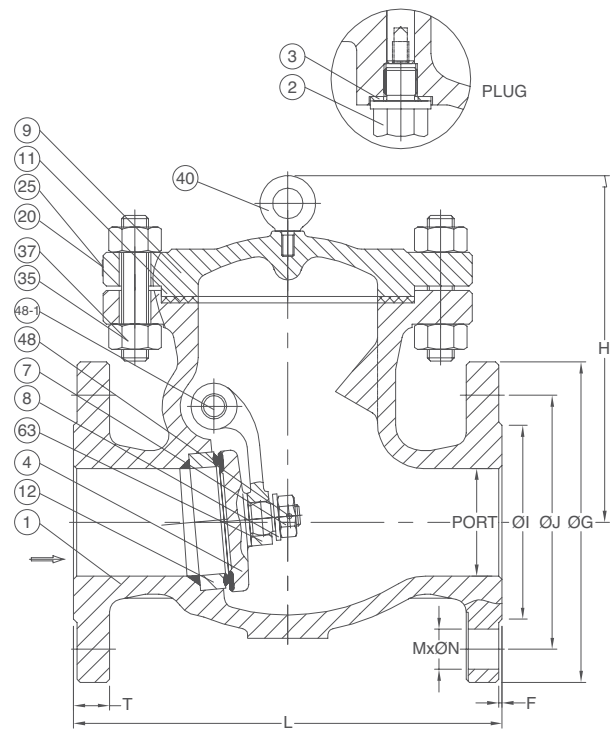
- Swing type design
- Bolted bonnet
- Body and bonnet joint accurately machined, full enclosed gasket
- Disc—robust one-piece construction to withstand the severe shock of check valve service
- Disc assembly—all parts are accessible from top for easy servicing
- Seat face stellited, ground and lapped to a mirror finish
- Pressure testing according to API 598

MATERIALS: SIZES 2" – 20"

No.	Part Name	Material (more options available)
1	BODY	ASTM A216 Gr.WCB
2	PLUG	ASTM A276 TYPE 410
3	PLUG SEAL	ASTM A276 TYPE 304
4	DISC	ASTM A216 Gr.WCB + 13Cr.
7	DISC NUT	ASTM A276 TYPE 410
8	DISC WASHER	ASTM A276 TYPE 410
9	BONNET	ASTM A216 Gr.WCB
11	GASKET	SS304 + GRAPHITE (SPW)
12	SEAT RING	ASTM A105 + STELLITE#6
20	RIVET	SS304
25	NAME PLATE	SS304
35	BODY BOLT (STUD)	ASTM A193 Gr.B7
37	STUD BOLT NUT	ASTM A194 Gr.2H
*40	EYE BOLT	CARBON STEEL
48	DISC NUT PIN	ASTM A276 TYPE 410
48-1	DISC PIN	ASTM A182 Gr.F6A
63	HINGE	ASTM A216 Gr.WCB

PRODUCT SPECIFICATIONS

- Valve design according to BS 1868
- Shell wall thickness according to API 600, BS 1868
- Pressure-temperature rating according to ASME/ANSI B16.34
- Material according to ASTM
- Face to face according to ASME/ANSI B16.10
- Flanged dimension according to ASME/ANSI B16.5



DIMENSIONS

Item No.	Size	Port	L	H(CLOSE)	O1	OJ	OG	T	M	ON
FNW571K	2"	2.01	8.00	5.71	3.62	4.75	6.00	0.56	4	3/4
FNW571L	2-1/2"	2.52	8.50	6.10	4.12	5.50	7.00	0.62	4	3/4
FNW571M	3"	2.99	9.50	6.85	5.00	6.00	7.50	0.69	4	3/4
FNW571P	4"	4.02	11.50	7.76	6.19	7.50	9.00	0.88	8	3/4
FNW571U	6"	5.98	14.00	10.63	8.50	9.50	11.00	0.94	8	7/8
FNW571X	8"	7.99	19.50	13.15	10.62	11.75	13.50	1.06	8	7/8
FNW57110	10"	10.00	24.50	15.83	12.75	14.25	16.00	1.12	12	1
FNW57112	12"	12.01	27.50	18.31	15.00	17.00	19.00	1.19	12	1
FNW57114	14"	13.27	31.00	21.34	16.25	18.75	21.00	1.31	12	1-1/8
FNW57116	16"	15.24	34.00	23.31	18.50	21.25	23.50	1.38	16	1-1/8
FNW57118	18"	17.24	38.50	24.41	21.00	22.75	25.00	1.50	16	1-1/4
FNW57120	20"	19.25	38.50	24.80	23.00	25.00	27.50	1.62	20	1-1/4