

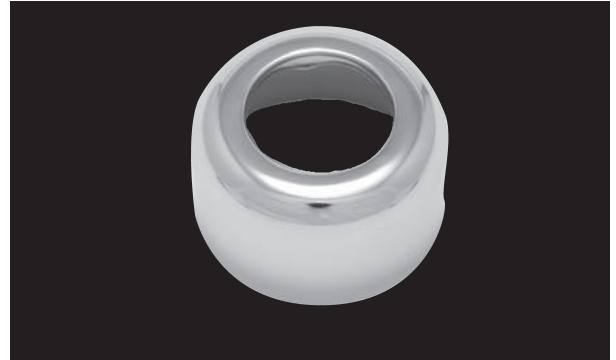


Escutcheons

Box Type

Product Features

- Fits iron pipe and tubular
- Chrome plated steel and polished brass



PFE36

Model Numbers

| ✓ For Submittal | Part Number | Description | Material | Thickness | IPS | Tubular | OUTSIDE DIAMETER | Finish |
|-----------------|-------------|----------------------------------|----------|-----------|--------|-----------|------------------|----------------|
| | PFE36 | 1-1/4" IPS CP BOX ESCUTCHEON | Steel | 28 GA | 1-1/4" | | 3" | Chrome Plated |
| | PFE37 | 1-1/2" IPS CP BOX ESCUTCHEON | Steel | 28 GA | 1-1/2" | | 3" | Chrome Plated |
| | PFE40 | 1-1/4" OD CP DEEP BOX ESCUTCHEON | Steel | 28 GA | | 1-1/4" OD | 3" | Chrome Plated |
| | PFE40PB | 1-1/4" OD PB DEEP BOX ESCUTCHEON | Steel | 28 GA | | 1-1/4" OD | 3" | Polished Brass |
| | PFE41 | 1-1/2" OD CP DEEP BOX ESCUTCHEON | Steel | 28 GA | | 1-1/2" OD | 3" | Chrome Plated |
| | PFE42 | 2" OD CP DEEP BOX ESC | Steel | 28 GA | | 2" OD | 3" | Chrome Plated |

Warranty and Codes

This PROFLO product carries a 1-year limited warranty.