



# Z5420

## Floor Mounted Siphon Jet Service Sink

TAG \_\_\_\_\_

### Architectural/Engineering Specification:

Z5420 Vitreous china, floor mounted blowout service sink with integral flushing rim, ZurnSHIELD™ ceramic glaze and 1-1/2" top spud. Front & side stainless steel rim guards in-cluded.

### Product Features:

- 27" [686 mm] x 20-1/2" [521 mm]
- Vitreous china
- ZurnSHIELD™ ceramic glaze creates a permanent surface that protects the fixture by inhibiting the growth of stain and odor causing mold mildew and bacteria, thus reducing the amount of time, chemicals and water to clean the bowl.
- Floor mounted service sink
- Siphon jet action
- Integral flushing rim
- 1-1/2" top spud
- Water surface: 10" x 10"
- Trap seal depth: 3-1/8"
- Shipping Weight 60lbs

### Compliance and Certification:

- Complies with ASME A119.2 / CSA B45.1



### Recommended Trim:

- Z6000AV-BWN1 AquaVantage® AV exposed closet flush valve with bedpan washer.

### Optional Trim:

- Z60843AV-BWN AquaVantage® AV exposed clinical sink flush valve with bedpan washer and service sink faucet.
- Z85500-WM Wall-mounted double foot pedal valve.

**Architectural/Engineering Approval**

The information contained in this document is subject to change without notice. Please contact Zurn for most up to date information.

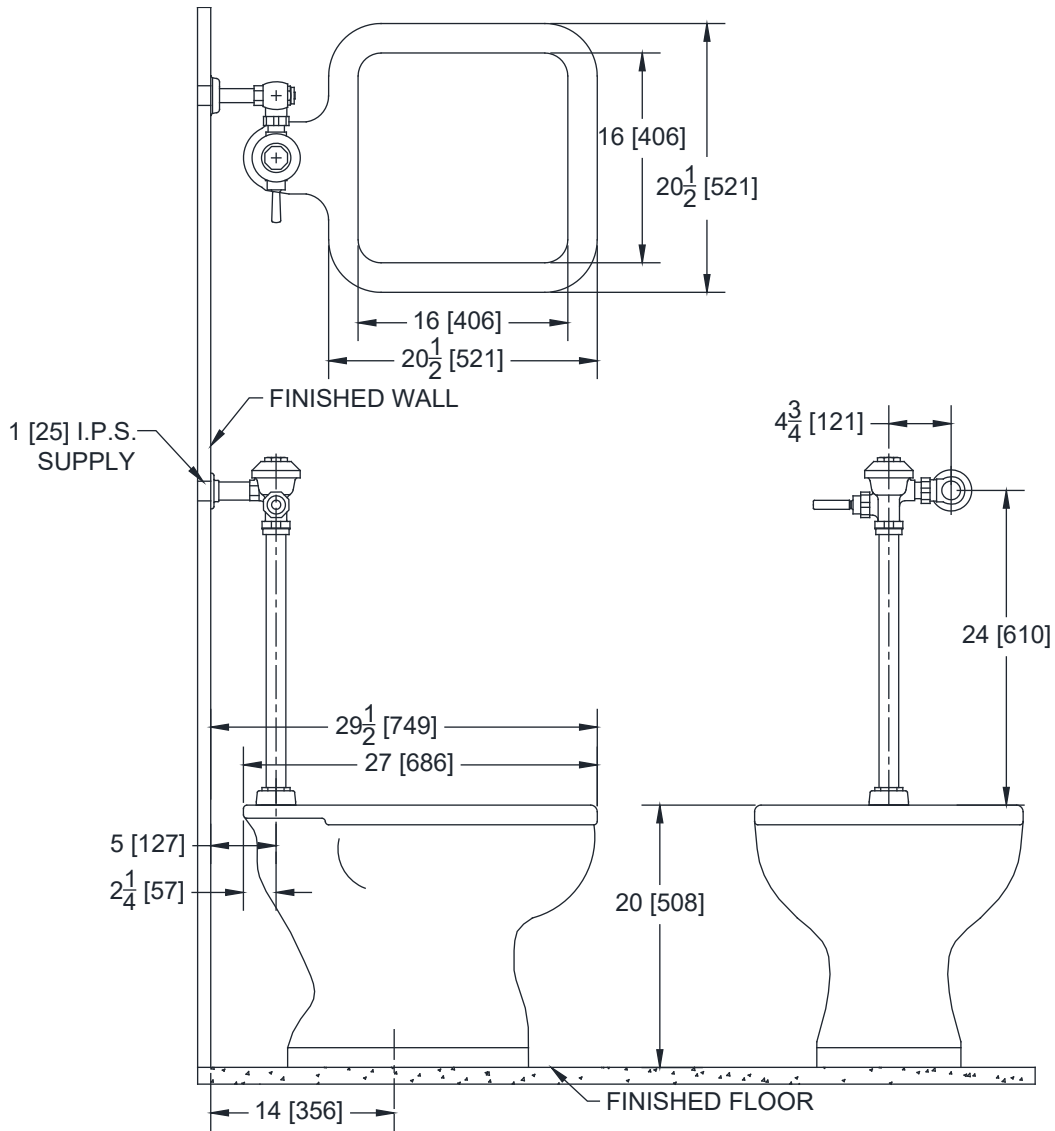


# Z5420

## Floor Mounted Siphon Jet Service Sink

TAG \_\_\_\_\_

### Rough-in dimensions/Overview dimensions



NOTE: Z6017AV shown above