

# CPVC TRANSITION FITTINGS

## » 646-CG SERIES

### SPECIFICATION

Sioux Chief ASTM D2846 CPVC transition fittings shall be used in plumbing systems for safe distribution of hot or cold water. Fittings shall be used for fluid communication with plumbing devices and fixtures. Transition fittings shall be listed to appropriate standards including ASTM fitting end specifications.

### MATERIALS

**Plastic:** CPVC

**Brass:** No Lead, Dezincification (DZR) resistant & Stress Corrosion Cracking (SCC) resistant

**O-ring:** EPDM

### MAXIMUM TEMPERATURE

180°F

### CERTIFICATIONS

cUPC, FGG/BM/CZ system compatible

### INSTALLATION LIMITATIONS

Do Not expose CPVC transition fitting to heat above those listed on tubing. Excessive heat will damage the integral o-ring seal. Do not install damaged fittings. Do not alter fittings. Do not solder or braze in close proximity to fitting unless it is protected with a heat-blocker to protect/keep the fitting under 180°F. Keep fitting free from hazardous chemicals or chemical vapors.

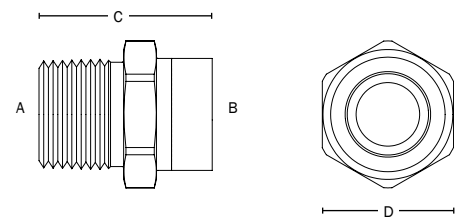
### DIMENSIONS

	646-CG2	646-CG3	646-CG4
<b>A:</b> MIP thread connection	1/2"	3/4"	1"
<b>B:</b> CPVC socket connection	1/2"	3/4"	1"
<b>C:</b> Overall height	1 3/8"	1 1/2"	1 7/8"
<b>D:</b> Overall hex width across flats	1"	1 3/8"	1 3/4"

ITEM # SUBMITTED	_____
JOB NAME	_____
LOCATION	_____
ENGINEER	_____
CONTRACTOR	_____
PO#	_____ TAG _____



646-CG3



Create Item Number

## 646-CGA

e.g. 646-CG3: 3/4" CPVC socket x 3/4" MIP

### CONNECTION SIZE A

- 2 = 1/2" CPVC socket x MIP
- 3 = 3/4" CPVC socket x MIP
- 4 = 1" CPVC socket x MIP