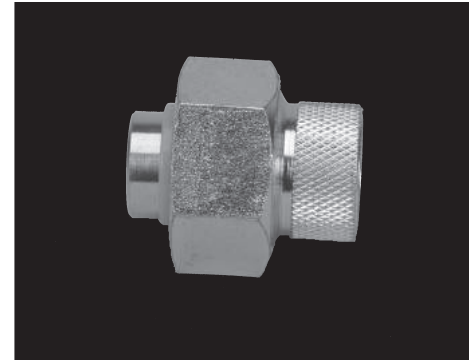


Low Lead Dielectric Unions



Product Features

- Max Pressure rated at 250 psi at 180°F or 50psi at 300°F
- Prevents electrolysis or galvanic action when connecting dissimilar materials
- Max. 10uA measured at 600 Volts AC
- Max. 3uA measured at 2000 Volts DC



PFXCCS22

Model Numbers		A		B		C		D	
		mm	in	mm	in	mm	in		
PFXCCS22	1/2" FIP x 1/2" Copper Sweat	41.5	1.63	47	1.85	20.8	0.82	1/2"	FIP
PFXCCS32	3/4" FIP x 1/2" Copper Sweat	47	1.85	42.9	2.08	20.8	0.82	3/4"	FIP
PFXCCS33	3/4" FIP x 3/4" Copper Sweat	47	1.85	51.5	2.03	27.17	1.07	3/4"	FIP
PFXCCS44	1" FIP x 1" Copper Sweat	54.3	2.14	57.5	2.26	33.5	1.32	1"	FIP
PFXCCS55	1 1/4" FIP x 1 1/4" Copper Sweat	65	2.56	64	2.52	39.87	1.57	1-1/4"	FIP
PFXCCS66	1 1/2" FIP x 1 1/2" Copper Sweat	75	2.95	64.3	2.53	46.48	1.83	1-1/2"	FIP
PFXCCS77	2" FIP x 2" Copper Sweat	95.5	3.76	72.5	2.85	60.45	2.38	2"	FIP

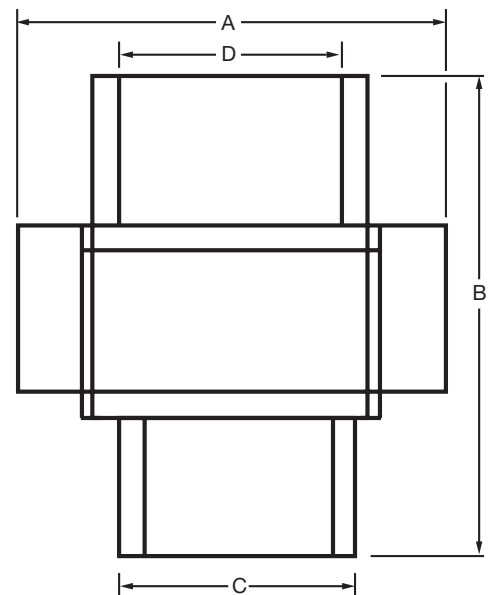
Replacement Parts

PFDUGD	1/2"	EPDM Dielectric Union Gasket
PFDUGF	3/4"	EPDM Dielectric Union Gasket
PFDUGFD	3/4"x1/2"	EPDM Dielectric Union Gasket
PFDUGG	1"	EPDM Dielectric Union Gasket
PFDUGH	1-1/4"	EPDM Dielectric Union Gasket
PFDUGJ	1-1/2"	EPDM Dielectric Union Gasket
PFDUGK	2"	EPDM Dielectric Union Gasket

*Gaskets are packaged in bags of 10 each

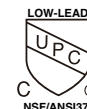
Material Specifications

Part	Material	Specification
Body	Forged carbon steel, galvanized	ANSI/ASME A108
Union Nut	Forged carbon steel, galvanized	ANSI/ASME A108
Solder adapter	Forged brass	ANSI/ASME B16.22
Gasket	EPDM rubber	Commercial Grade
Insert Insulator	PSU (Polysulfone) Sleeve	Commercial Grade



Warranty and Codes

This PROFLO product carries a 1-year limited warranty



Distributed Exclusively by Ferguson and Wolseley Canada