



# Z5850

Custodial Floor Sink

TAG \_\_\_\_\_



## Z5850

- 28" [711 mm] x 28" [711 mm]
- Enameled cast iron
- Corner floor service sink
- 8" high front curb
- Large, flat bottom with fluted channels for fast drainage
- Integral tiling bead
- Shipping Weight: 210 lbs.

### Z5850 Series

#### Recommended trim:

- Z843M1** 8" service sink faucet

#### Engineering Specification:

- Z5850** 28" x 28" enameled cast iron corner floor sink. Provided with grid drain (specify outlet size).

#### Options:

- D2** Drain with 2" IPS connection
- D3** Drain with 3" IPS connection
- RG** Removable vinyl-coated rim guard

This space is for Architectural/engineering Approval

*These dimensions and specifications are subject to change without notice.*

*Fixture dimensions meet ANSI/ASME standard A112.19.2 and CAN/CSA B45 requirements.*

See Zurn One Systems for suggested packages.

**Zurn Plumbing Products Group** Commercial Brass and Fixtures Operation  
2640 South Work Street · Falconer, NY 14733 · Phone: 716-665-1132 · Fax: 716-665-1135 · www.zurn.com

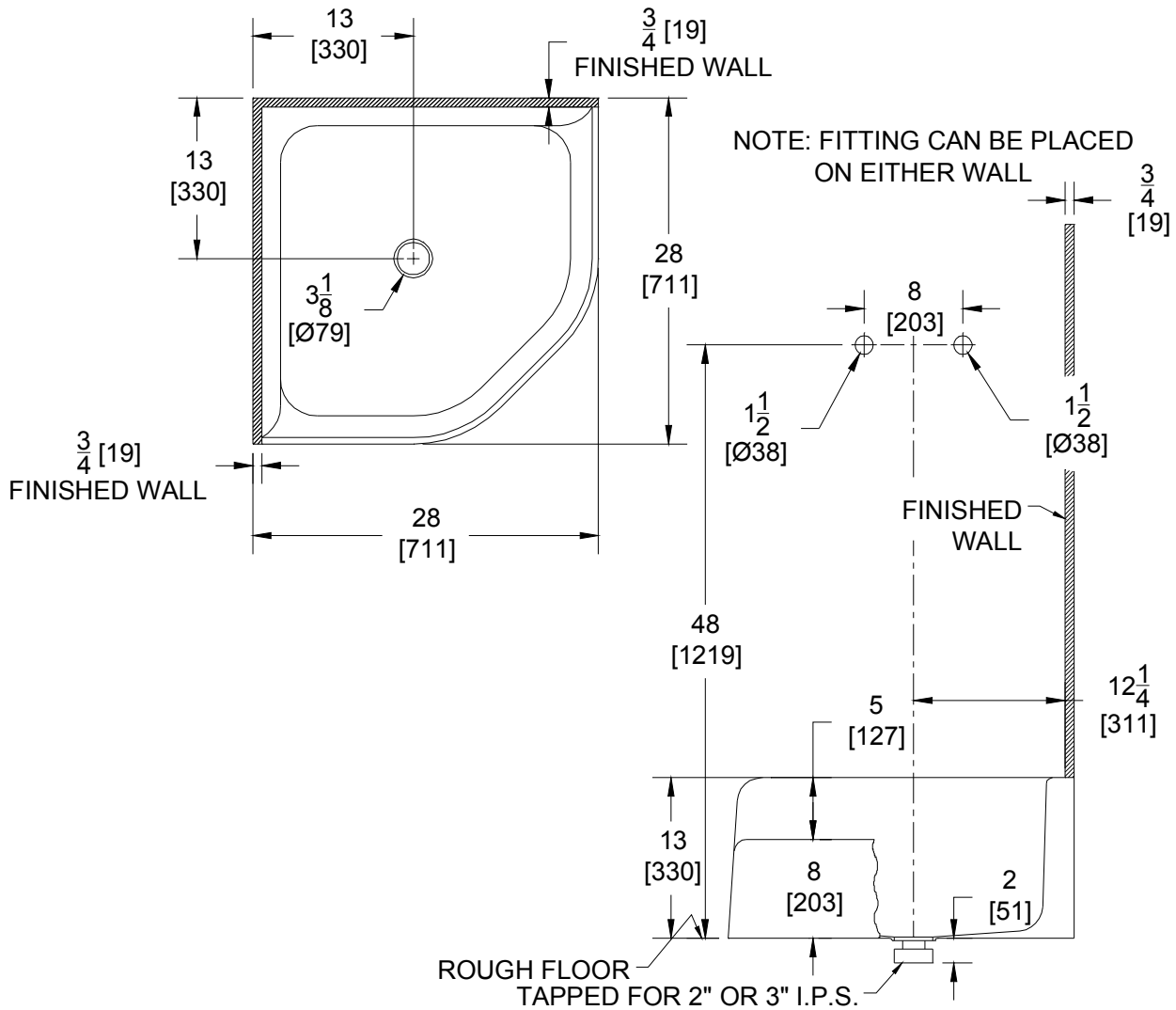


# Z5850

## Custodial Floor Sink Rough-In

TAG \_\_\_\_\_

Rough-in dimensions for Z5850



These dimensions and specifications are subject to change without notice.

Fixture dimensions meet ANSI/ASME standard A112.19.2 and CAN/CSA B45 requirements.

**Zurn Plumbing Products Group** Commercial Brass and Fixtures Operation  
2640 South Work Street · Falconer, NY 14733 · Phone: 716-665-1132 · Fax: 716-665-1135 · www.zurn.com