

STUDIO™ UNDERCOUNTER SINK

- Rectangular undercounter mount sink
- Made from vitreous china
- Front overflow
- Supplied with mounting kit (047194-0070A) and template

0614.000 Unglazed Rim

540 x 387mm
(21-1/4" x 15-1/4")

0614.300 Glazed underside

Bowl size:

464mm (18-1/4") wide
308mm (12-1/8") front to back
171mm (6-3/4") deep

0618.000 Unglazed Rim

600 x 422mm
(23-5/8" x 16-5/8")

0618.300 Glazed underside

Bowl size:

537mm (21-1/8") wide
356mm (14") front to back
152mm (6") deep

**Compliance Certifications -
Meets or Exceeds the
Following Specifications:**

- ASME A112.19.2M for Vitreous China Fixtures
- CAN/CSA B45 series

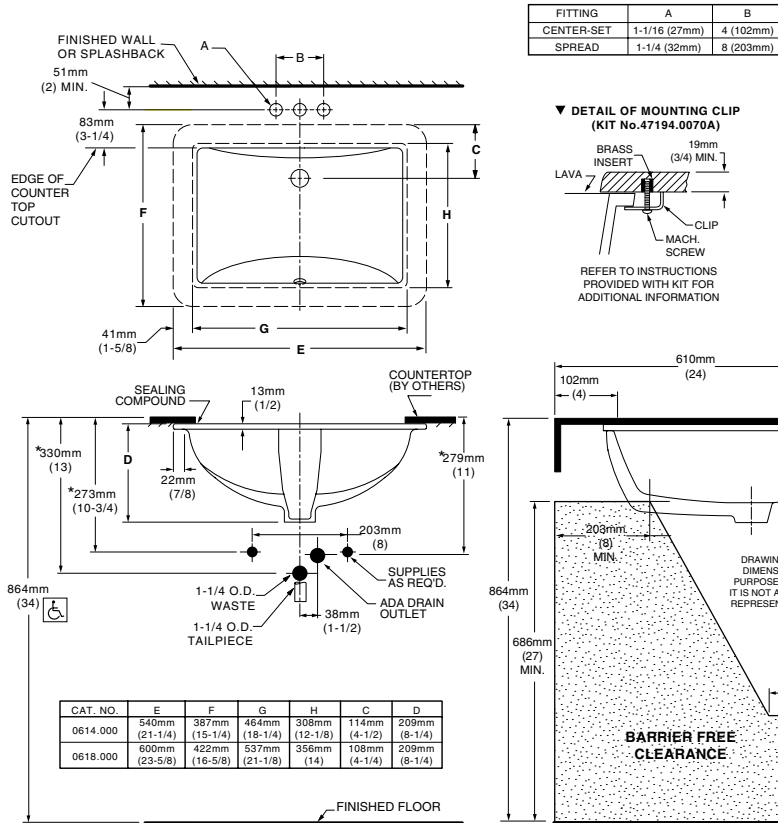
To Be Specified:

- Color: White Bone
 Linen Black
- Faucet*:
- Faucet Finish:
- Supplies:
- 1-1/4" Trap:

* See faucet section for additional models available

MEETS THE AMERICANS WITH DISABILITIES ACT GUIDELINES AND ANSI A117.1 ACCESSIBLE AND USABLE BUILDINGS AND FACILITIES - CHECK LOCAL CODES.

- Countertop 864mm (34") from finished floor. Lavatory installed 102mm (4") from front edge of countertop. Countertop thickness to be 25mm (1") maximum.



NOTES:

- WE RECOMMEND USING BASIN AS A TEMPLATE TO DETERMINE PROPER CONTOUR. CUT COUNTERTOP 38MM (1-1/2") INSIDE BASIN CONTOUR.
- * DIMENSIONS SHOWN FOR LOCATION OF SUPPLIED AND "P" TRAP ARE SUGGESTED.
- ▼ UNDERCOUNTER MOUNTING KIT SUPPLIED WITH SINK. FITTINGS NOT INCLUDED WITH FIXTURE AND MUST BE ORDERED SEPARATELY.
- SEALING COMPOUND SUPPLIED BY OTHERS.

IMPORTANT: Dimensions of fixtures are nominal and may vary within the range of tolerances established by ANSI Standard A112.19.2. These measurements are subject to change or cancellation. No responsibility is assumed for use of superseded or voided pages.