

# BELL HANGER



## Product Features

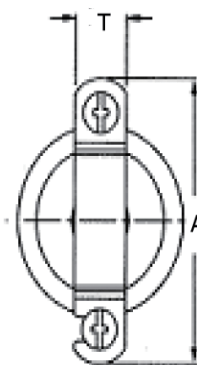
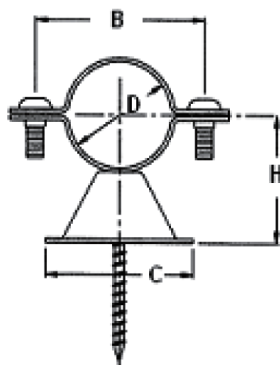
- Carbon steel.
- Assembled with #10 x 2 coarse thread drywall screw.
- Epoxy coated steel/copper tube size bell hangers with zinc dichromate screws.
- Recessed mounting screw has a pierce point to penetrate metal studs.
- Provides 13/16" standoff.



**BELL HANGER**

## Product Specifications

Ferguson #	TUBE SIZE	D TUBE O.D.	SPECIFICATION DATA				
			A	B	C	H	T
PFBHD	1/2"	0.625	2 3/16	1 9/16	1 5/8	1 1/16	1/2
PFBHF	3/4"	0.875	2 3/8	1 3/4	1 5/8	1 3/16	1/2
PFBHG	1"	1.125	2 7/16	1 7/8	1 5/8	1 5/16	1/2
PFBHH	1-1/4"	1.375	2 11/16	2 1/8	1 5/8	1 7/16	1/2
PFBHJ	1-1/2"	1.625	3 1/16	2 7/16	1 5/8	1 9/16	1/2
PFBHK	2"	2.125	3 7/16	2 13/16	1 5/8	1 13/16	1/2



## Warranty and Codes

This PROFLO product carries a 1-year limited warranty.