



Product Specification

Vanity Sink Base Cabinets

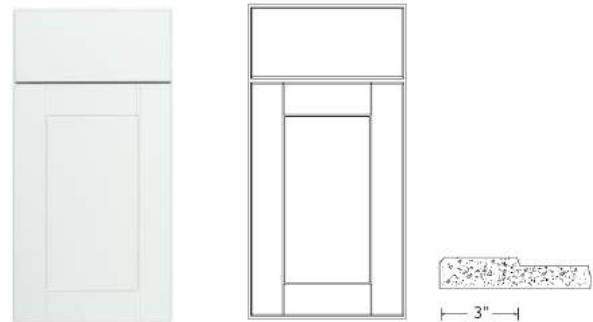
Brand: Continental Cabinets
 Product Description: Vanity Sink Base Cabinets
 Series: Andover
 Door Style: Shaker Style – Full Overlay
 Finish: White Rigid Thermofoil (RTF)
 Model #: KVS24-SSW, KVS30-SSW, KVS36-SSW
 Accessory: KATKX-SW

Vanity Sink Base Widths: 24", 30" and 36"
 Height (All): 34½"
 Depth (All): 21"

Doors

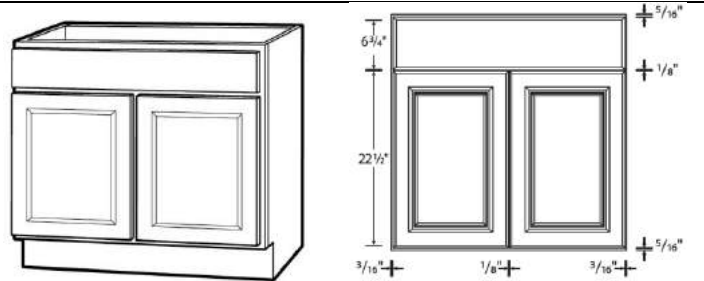
- Full overlay, shaker door style
- White Rigid Thermofoil (RTF) finish – a thick vinyl material pressed onto an 11/16" thick routed MDF (medium density fiberboard) panel with heat and pressure. Conforms to door shape and around edges to seal the surface
- Impact, scratch and stain resistant
- Passes KCMA edge soak test for water resistance

Door Profile

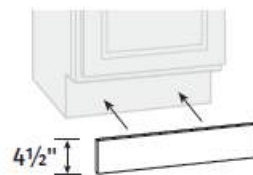


Vanity Base Cabinets

- 3/4" thick face frame, 1-1/2" wide material with pocket screwed vinyl wrapped construction
- 3/8" hardboard full back panel
- 3/8" bottom panel, fully encapsulated engineered particle board wood
- 1/2" engineered particle board wood side panels with white laminate exterior to match cabinet finish
- Double door cabinets allow for full-access, no center stile
- Natural maple laminate finished interiors
- Unfinished toe notch toe-kick (finished toe-kick sold separate)
- Fully concealed, adjustable, self-closing hinges



Toe-kick Molding



Meets HUD Minimum Property Standards

Adding Value to America's Homes

www.ContinentalCabinetry.com • 800-229-5840