

FIGURE 7010NZ HANGERS



ADJUSTABLE SWIVEL RING HANGERS

FEATURES

- Size Range - 1/2" through 8"
- Material - Carbon Steel
- Finish - Zinc Plated

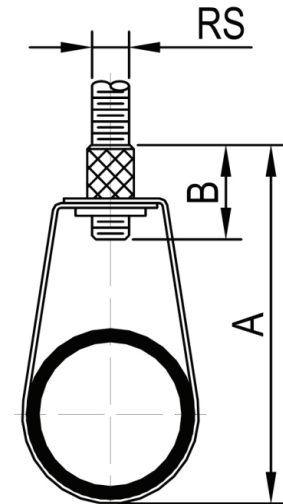
PRODUCT SPECIFICATIONS

Services

- 1/2"-4" hanger have flared edges for ease of installation on all pipe types and protects CPVC plastic pipe from abrasion.
- Manufactured to use the min. rod size permitted by NFPA for fire sprinkler pipe line

Approvals

- Federal Specifications - A-A-1192A (Type 10) WW-H-171-E (Type 10) and MSS-SP-69 (Type 10)
- FM approved (except 1/2") and UL/ULC Listed



REFERENCE CHART

Catalog Number	Pipe Size		Rs		A		B		Wt.		Max. Static Load	
	in.	mm	in.	mm	in.	mm	in.	mm	lb	kg	lbs	N
FNW7010NZ0050	1/2"	DN15	3/8	M10	2.76	70	1	25	0.09	0.04	300	1334
FNW7010NZ0075	3/4"	DN20	3/8	M10	3.07	78	1	25	0.09	0.04	300	1334
FNW7010NZ0100	1"	DN25	3/8	M10	3.31	84	1	25	0.1	0.05	300	1334
FNW7010NZ0125	1-1/4"	DN32	3/8	M10	3.62	92	1	25	0.1	0.05	300	1334
FNW7010NZ0150	1-1/2"	DN40	3/8	M10	3.82	97	1	25	0.11	0.05	300	1334
FNW7010NZ0200	2"	DN50	3/8	M10	4.33	110	1	25	0.12	0.06	300	1334
FNW7010NZ0250	2-1/2"	DN65	3/8	M10	6.30	160	1	25	0.27	0.12	525	2334
FNW7010NZ0300	3"	DN80	3/8	M10	6.34	161	1	25	0.32	0.14	525	2334
FNW7010NZ0350	3-1/2"	DN90	3/8	M10	6.69	170	1	25	0.33	0.15	585	2600
FNW7010NZ0400	4"	DN100	3/8	M10	7.36	187	1	25	0.38	0.17	650	2890
FNW7010NZ0500	5"	DN125	1/2	M12	8.98	228	1.26	32	0.56	0.25	1000	4445
FNW7010NZ0600	6"	DN150	1/2	M12	11.10	282	1.26	32	0.67	0.31	1000	4445
FNW7010NZ0800	8"	DN200	1/2	M12	12.68	322	1.26	32	0.78	0.35	1000	4445