

# Wyndham Two Door Vanity



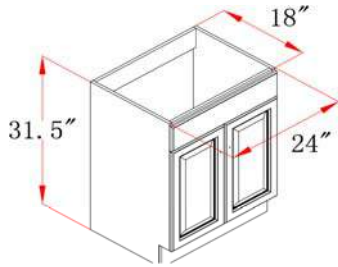
## Specifications

- Durable white thermofoil finish with satin nickel hardware
- Cam lock connection, frameless design
- California 93120 CARB P2 compliant
- Ready to assemble construction
- Square raised door
- Durable white thermofoil door
- Particle board with white PVC inside and outside side panels
- 2 Door 1 fake drawer design
- Adjustable and concealable hinge, easy glide drawer glides
- Satin Nickel hardware with TruMatch finish

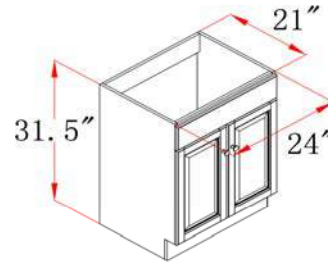
Vanity top and faucet sold separately



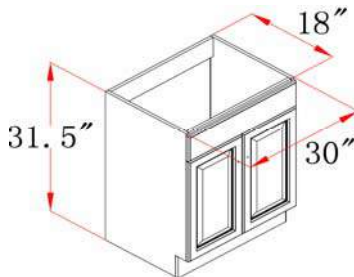
## Dimensions



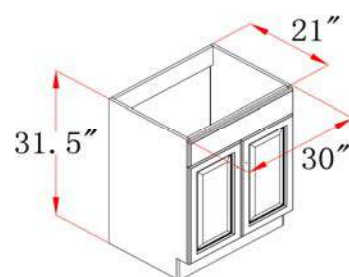
531731



531939



531749



531947

## Warranty & Compliances

**Warranty** Limited 1 year warranty  
**California 93120** Compliant



## Order Codes & Finishes/Colors

24" w x 18" d x 31.5" h	531731
24" w x 21" d x 31.5" h	531939
30" w x 18" d x 31.5" h	531749
30" w x 21" d x 31.5" h	531947

<b>Type:</b>
<b>Job:</b>
<b>Order Code:</b>
<b>Approvals:</b>

Design House reserves the right to make changes in materials, specifications & models at any time. Design House also reserves the right to discontinue product without notice or obligation.

---