

Wall Hung Closet Series

ST-2000 WALL HUNG SERIES

Item No.	Code No.	Part No.	Description
1.	2102059	ST-2059-A	Top Spud 1.1 to 1.6 gpf (4.2 to 6.0 Lpf) Universal Wall Hung Closet - Discontinued
2.	2102060	ST-2060-A	HET Rear Spud 1.28 gpf (4.8 Lpf) Wall Hung Closet - Discontinued
	2102063	ST-2063-A	Rear Spud 1.6 gpf (6.0 Lpf) Wall Hung Closet
3.	2112059	ST-2059-A-BPL	Top Spud 1.1 to 1.6 gpf (4.2 Lpf to 6.0 Lpf) Bedpan Lug Universal Wall Hung Closet - Discontinued
4.	2102459	ST-2459	Top Spud 1.1 to 1.6 gpf (4.2 to 6.0 Lpf) Universal Wall Hung Closet
5.	2112459	ST-2459-BPL	Top Spud 1.1 to 1.6 gpf (4.2 Lpf to 6.0 Lpf) Bedpan Lug Universal Wall Hung Closet
6.	2102469	ST-2469	Rear Spud 1.1 to 1.6 gpf (4.2 to 6.0 Lpf) Universal Wall Hung Closet



Floor Mount Closet Series

ST-2000 FLOOR MOUNT SERIES

Item No.	Code No.	Part No.	Description
1.	2102009	ST-2009	Top Spud 1.1 to 1.6 gpf (4.2 to 6.0 Lpf) Universal Floor Mount Closet
2.	2102010	ST-2010-A	HET Rear Spud 1.28 gpf (4.8 Lpf) Floor Mount Closet - Discontinued
	2102012	ST-2012-A	HET Rear Spud 1.6/1.1 gpf (6.0/4.2 Lpf) Floor Mount Closet - Discontinued
	2102013	ST-2013-A	Rear Spud 1.6 gpf (6.0 Lpf) Floor Mount Closet - Discontinued
	2102019	ST-2019	Rear Spud 1.6 gpf (6.0 Lpf) Universal Floor Mount Closet
3.	2102029	ST-2029	Top Spud 1.6/1.1 gpf (4.2 to 6.0 Lpf) ADA Universal Floor Mount Closet
	2112029	ST-2029-A-BPL	Top Spud 1.6/1.1 gpf (4.2 to 6.0 Lpf) ADA Bedpan Lug Universal Floor Mount Closet
4.	2102039	ST-2039	Rear Spud 1.1–1.6 gpf (4.2–6.0 Lpf) ADA Universal
	2102030	ST-2030-A	HET Rear Spud 1.28 gpf (4.8 Lpf) ADA Floor Mount Closet - Discontinued
	2102032	ST-2032-A	Rear Spud 1.6/1.1 gpf (6.0/4.2 Lpf) ADA Floor Mount Closet - Discontinued
	2102033	ST-2033-A	Rear Spud 1.6 (6.0) ADA Floor Mount Closet Discontinued
5.	2102229	ST-2229	Top Spud 1.1 to 1.6 gpf (4.2 to 6.0 Lpf) ADA Universal Floor Mount Rear Outlet Closet
6.	2102449	ST-2449	Top Spud 1.1 to 1.6 gpf (4.2 to 6.0 Lpf) Universal Floor Mount TAS Closet (not shown)
7.	2102309	ST-2309	Top Spud 1.1 to 1.6 gpf (4.2 to 6.0 Lpf) Universal Junior Toilet
	0319127	ST-27-A	Spud Assembly 1 1/2" - All Closets (not shown)



Wall Hung & Floor Mount Closet Series

TROUBLESHOOTING GUIDE

1. Water does not shut off in bowl.

- A. Malfunctioning flushometer.
Contact Sloan Technical Support at
1-888-SLOAN-14 (1-888-756-2614).
- B. Supply pressure too low. Minimum flowing pressure must be 25 PSI.
Adjust supply pressure.

2. Water is leaking from toilet.

- A. Toilet is not properly mounted. Tighten toilet mount nuts.
- B. Toilet is not properly mounted. Replace gasket seal.

3. Toilet emits odor.

- A. Plugged vent line. Remove or clear obstruction in vent line.

4. Poor or sluggish flush.

- A. Supply pressure too low. Water supply must be able to provide 18 gpm at 25 psi.
- B. Partially clogged trapway and/or drain pipe and/or vent. Remove or clear obstruction in vent line.

IMPORTANT INFORMATION

1. Do not use harsh or caustic chemicals such as drain opening types in this system. These products will damage the vitreous finish.
2. Do not permit foreign objects (i.e., paper towels, paper cups, sanitary napkins, etc.) to be flushed through the toilet.
3. The toilet must be regularly cleaned. See CARE AND CLEANING for details.

CARE AND CLEANING

Sloan's toilets should be cleaned regularly for maximum sanitary and operational performance. As with any plumbing product consistency is important to achieve efficiency and general cleanliness. Before you begin to clean a toilet, gather all the needed materials including personal protection equipment, such as gloves and eyewear.

What You'll Need:

Goggles/safety glasses
Toilet Brush
Gloves
Cleanser for inside the bowl
Cleanser for outside the bowl
Paper towels or cloth

Inside Toilet Bowl:

Add your choice of powder, liquid or gel cleanser to the bowl*. Try to apply the cleaner as close to the toilet rim as possible to prevent diluted cleanser. Begin cleaning the bowl from the top down. Always begin scrubbing under the rim first. Look under the rim to get all the stains and grime scrubbed away. Next scrub the bowl. Finally scrub the drain at the bottom of the bowl. Flush the toilet.

Outside Toilet:

Using a disinfectant/detergent cleaner, mixed either in a spray bottle or in a bucket (according to label instructions), spray or wipe down all the hard surfaces outside of the bowl paying close attention to high touch areas like the toilet seat and flushometer. **NOTE: DO NOT use abrasive or chemical cleaners (including chlorine) to clean flushometers that may dull the luster and attack the chrome or special decorative finishes. Use ONLY mild soap and water, then wipe dry with a clean towel or cloth. If cleaning the fixture with an abrasive or chemical cleaner protect the flushometer from any splattering of cleaner.** **Acids and cleaning fluids will discolor or remove the finish.** The toilet seat should never be neglected. It is the part of the toilet that comes into actual contact with people, and it needs to be cleaned thoroughly. Raise the seat. Spray the seat, inside lid (if applicable) and the rim of the toilet with cleanser. Wipe down the lid, seat and hinges at the back of the toilet seat.

Wipe Up Spills:

Wipe up any spills that may have splashed or occurred during cleaning.

Service Tip:

Checking for water leaks around toilet fixtures can be difficult to locate the source. Place paper towels around suspected area. It is best to start at the top of the fixture since gravity will cause the water leak to run downward.

When assistance is required, please contact

Sloan Technical Support at: 1-888-SLOAN-14 (1-888-756-2614).

*Consult your local janitorial supply to advise best cleansers to use for local water types. Always use cleaners according to their instructions.

Pressure Assist Water Closets



**WETS-8009 Series
STD**



**WETS-8029 Series
ADA**

Water Closet Model	Bowl Code	Tank Code	Rim	GPF
WETS-8009.8016 WETS-8009.8010 WETS-8009.8013	2108009	2108016 2108010 2108013	Standard	1.0 gpf/3.8 Lpf 1.28 gpf/4.8 Lpf 1.6 gpf/6.0 Lpf
WETS-8009.8116 WETS-8009.8110 WETS-8009.8113		2108116 2108110 2108113		1.0 gpf/3.8 Lpf 1.28 gpf/4.8 Lpf 1.6 gpf/6.0 Lpf
WETS-8029.8016 WETS-8029.8010 WETS-8029.8013	2108029	2108116 2108110 2108113	ADA	1.0 gpf/3.8 Lpf 1.28 gpf/4.8 Lpf 1.6 gpf/6.0 Lpf
WETS-8029.8016 WETS-8029.8010 WETS-8029.8013		2108116 2108110 2108113		1.0 gpf/3.8 Lpf 1.28 gpf/4.8 Lpf 1.6 gpf/6.0 Lpf

Pressure Assist Water Closets

TROUBLESHOOTING GUIDE

1. Poor Flush.

- A. Check the overall height of the lever in comparison to the frame, and adjust if required.
- B. Make sure water supply valve is fully open.
- C. Flush the supply line to clear any debris and clean inlet screen.
- D. Check bowl (main jet, rim holes and trapway), drain line, and vent for blockage.
- E. Check water pressure supply, operating range is 20-80 PSI (503 Series), 25-80 PSI (504 Series).

2. Pressure vessel takes a long time to fill.

- A. Make sure water supply valve is fully open.
- B. Flush the supply line to clear any debris and clean inlet screen.
- C. Check water pressure supply, operating range is 20-80 PSI (503 Series), 25-80 PSI (504 Series).

3. Noisy pressure vessel water refill.

- A. Flush the supply line to clear any debris and clean inlet screen.
- B. Flush the toilet and hold the handle down for 30 to 40 seconds to flush the system.

4. Water continues to flow through the vessel and will not refill.

- A. Check the overall height of the lever in comparison to the frame, the cable connection to the frame and lever, and adjust if required.
- B. Make sure water supply valve is fully open.
- C. Flush the supply line to clear any debris and clean inlet screen.
- D. Check cartridge and adjust if required.

5. Handle does not activate flush.

- A. Check the cable cassette connection to handle the cable connection to the frame and lever, and adjust if required.
- B. Make sure water supply valve is fully open.
- C. Flush the supply line to clear any debris and clean inlet screen.

6. If the water rises in bowl during the flush and stays there, or drains slowly.

- A. Check bowl (main jet, rim holes and trapway), drain line, and vent for blockage.

7. Leaking tanks.

- A. Check the tank-to-bowl gasket to ensure it is aligned properly and tighten the tank bolts.
- B. Check tank for cracks. If cracked the tank must be replaced.
- C. Check tank bolts. Rubber washers may be corroded or bolts may be loose. Replace or tighten as necessary.

NOTE: be careful not to overtighten nuts on tank as this may result in cracking the tank.

NOTE: It is normal to have some residual water (less than 1") inside the tank. The vessel is equipped with a drain valve to drain off excess water.

Cleaning & Maintenance

Clean water closet at least once per week with a cleaner safe for vitreous china. Spray and wipe clean using soft cloth.

Soft abrasive cleaners may be used to remove stains. If you live in a hard water area, you should make certain that the holes under the rim are kept clean and free of mineral build up for proper bowl performance. Use a long-handled brush to clean the rim holes.

Make sure to periodically clean the in-line filter located in the water inlet of the water supply valve.

CAUTION: Do not use any in-tank cleaners or deodorizers. Products containing chlorine (calcium hypochlorite) can seriously damage the Flushmate as well as the fittings in your tank. This damage can cause leakage and property damage. For more complete up-to date information please visit us at www.sloan.com.

If further assistance is required, if you should still have trouble contact Sloan Technical Support at: 1-888- SLOAN-14 (1-888-756-2614)

Washdown Urinal Series

STANDARD URINAL SERIES



Item No.	Code No.	Part No.	Description
1. Discontinued	1101000	SU-1000-A	HEU Top Spud 0.125 gpf (0.5 Lpf) Standard Urinal
	1101002	SU-1002-A	HEU Top Spud 0.25 gpf (1.0 Lpf) Standard Urinal
	1101005	SU-1005-A	HEU Top Spud 0.5 gpf (1.9 Lpf) Standard Urinal
	1101006	SU-1006-A	Top Spud 1.0 gpf (3.8 Lpf) Standard Urinal
	1101009	SU-1009	HEU Top Spud 0.125 to 0.5 gpf (0.5 to 1.9 Lpf) Universal Standard Urinal
2.	1101010	SU-1010-A	HEU Rear Spud 0.125 gpf (0.5 Lpf) Standard Urinal
	1101012	SU-1012-A	HEU Rear Spud 0.25 gpf (1.0 Lpf) Standard Urinal
	1101015	SU-1015-A	HEU Rear Spud 0.5 gpf (1.9 Lpf) Standard Urinal
	1101016	SU-1016-A	Rear Spud 1.0 gpf (3.8 Lpf) Standard Urinal
	1101019	SU-1019	HEU Rear Spud 1.0 gpf (3.8 Lpf) Standard Urinal



Retrofit Urinal Series

RETROFIT URINAL SERIES

Item No.	Code No.	Part No.	Description
3. Discontinued	1101200	SU-1200-A	HEU Top Spud 0.125 gpf (0.5 Lpf) Retrofit Urinal
	1101202	SU-1202-A	HEU Top Spud 0.25 gpf (1.0 Lpf) Retrofit Urinal
	1101205	SU-1205-A	HEU Top Spud 0.5 gpf (1.9 Lpf) Retrofit Urinal
	1101209	SU-1209	HEU Top Spud 0.125 to 0.5 gpf (0.5 to 1.9 Lpf) Universal Retrofit Urinal
4. Discontinued	1101210	SU-1210-A	HEU Rear Spud 0.125 gpf (0.5 Lpf) Retrofit Urinal
	1101212	SU-1212-A	HEU Rear Spud 0.25 gpf (1.0 Lpf) Retrofit Urinal
	1101215	SU-1215-A	HEU Rear Spud 0.5 gpf (1.9 Lpf) Retrofit Urinal
	1101219	SU-1219	HEU Rear Spud 0.125 to 0.5 gpf (0.5 to 1.9 Lpf) Universal Retrofit Urinal



Small Urinal Series

SMALL URINAL SERIES

Item No.	Code No.	Part No.	Description
5.	1107009	SU-7009	HEU Top Spud 0.125 to 0.5 gpf (0.5 to 1.9 Lpf) Universal Small Urinal
	1107006	SU-7006	Top Spud 1.0 gpf (3.8 Lpf) Small Urinal
6.	1107019	SU-7019	HEU Rear Spud 0.125 to 0.5 gpf (0.5 to 1.9 Lpf) Universal Small Urinal
	1107016	SU-7016	Rear Spud 1.0 (3.8 Lpf) Small Urinal

ACCESSORIES

0319147	SU-47-A	Spud Assembly 3/4" - All Urinals (Not Shown)
----------------	---------	--

Hybrid & Waterfree Urinal Series



HYBRID URINAL

HYB-1000

1. **1001020** HYB-1000 Vitreous China Standard Hybrid Urinal
14" × 19 5/8" × 26 3/4"
-

HYB-1000 RET

2. **1001021** HYB-1000 RET Vitreous China Retrofit Hybrid Urinal
14 3/8" × 16 5/8" × 26 3/4"
-



HYB-4000

3. **1004020** HYB-4000 Vitreous China Hybrid Urinal
14" × 15 3/8" × 22 5/8"
-

HYB-7000

4. **1007020** HYB-7000 Vitreous China Hybrid Urinal
14 5/8" × 12 3/4" × 21 7/8"
-



WATERFREE URINALS

WES-1000

5. **1001000** WES-1000 Vitreous China Standard Waterfree Urinal
14 3/8" × 19 5/8" × 26 3/4"
-

WES-4000

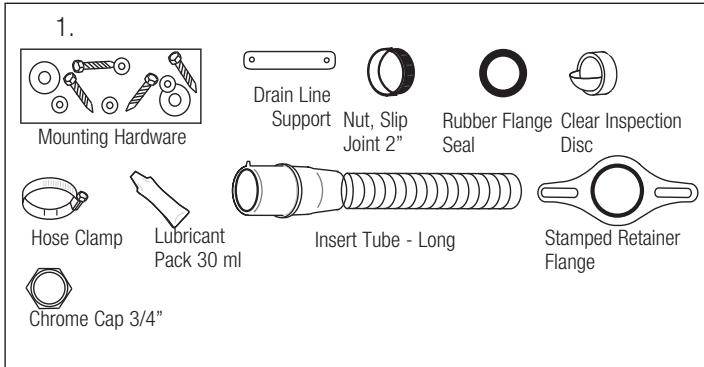
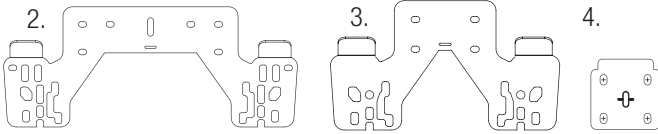
6. **1004000** WES-4000 Vitreous China Small Waterfree Urinal
14" × 15 3/8" × 22 5/8"
-



WES-7000

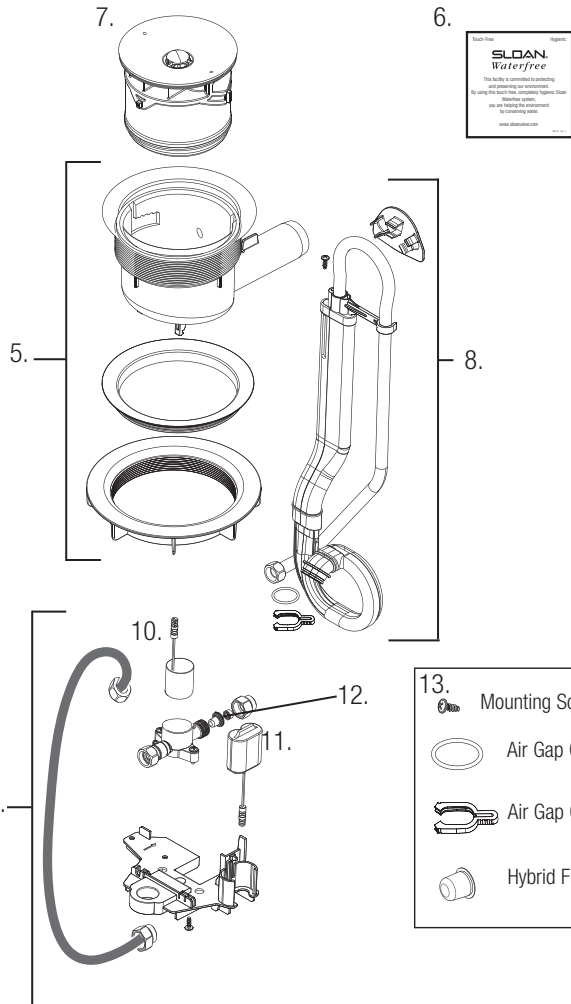
7. **1007000** WES-7000 Vitreous China Designer Waterfree Urinal
14 5/8" × 12 3/4" × 21 7/8"
-

Hybrid & Waterfree Urinal Series



PARTS LIST—

Item			
No.	Code No.	Part No.	Description
1.	1001520	WES-20	Uni-Coupler II - Hardware Kit
2.	0372012	WES-34	Hanger Bracket-WES-1000 & HYB-1000
3.	0372022	WES-36	Hanger Bracket-WES-2000 & HYB-7000
4.	0372032	WES-38	Hanger Bracket-WES & HYB-4000, 5000 & WES-7000
5.	1001510	WES-10	Waterfree Housing Assembly
	0214500	HYB-1-A	Hybrid Housing Assembly
6.	10011521	WES-31	Waterfree Wall Plate
7.	1001500	WES-150	Universal Waterfree Urinal Cartridge
8.	0214502	HYB-3-A	Hybrid Air Gap Assembly
9.	0214501	HYB-2-A	Hybrid Base Plate Assembly
10.	0335001	EHF-2	Hybrid Solenoid
11.	0214504	HYB-5	Hybrid 6V Lithium Battery
12.	0335007	EHF-9	Hybrid Filter
13.	0214503	HYB-4-A	Hybrid Service Kit (Mfg screw, air gap, o-ring & clip)



PRODUCT DESCRIPTION

Sloan Waterfree Urinals use no water which reduces germs and odor. This is because odor-causing germs and bacteria require water to live and to multiply.

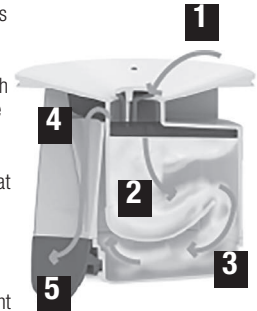
Urine contains biosolids.

- For a water flushing urinal a very hard material called calcite forms in the p-trap and drain walls when urine mixes with water. Calcite causes clogs and requires a mechanical auger to remove.
- For a waterfree urinal a soft buttery substance known as struvite forms in urine in the absence of water. Struvite can form in drain lines over time, however, it is water soluble and only requires water to clean.

Sloan utilizes a patented cartridge assembly as the core of its waterfree urinal operation.

HOW IT WORKS

1. The cartridge begins full of liquid with a layer of proprietary biodegradable sealant that floats on the surface.
2. Waste enters the cartridge and passes through this sealant which isolates foul odors from the restroom.
3. Flowing waste is slowed by internal baffles that help retain sealant and allows the uric sediment to settle.
4. Waste flows past an internal trap and exits the cartridge leaving some of the uric sediment behind.
5. The urine accelerates as it is funneled down to a flexible spout where it is redirected out of the housing and into the drain pipe.



Waterfree urinals require regular maintenance to prevent struvite formation from causing drain line blockages-cartridge change & line flushing.

Sloan hybrid urinals offer an automatic drain-rinsing feature that utilizes a controller and solenoid valve to inject water through housing and the lateral drain line.

Hybrid & Waterfree Urinal Series

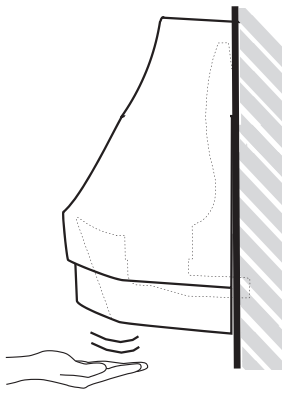
OPERATION (Hybrid Urinals Only)

1 AUTOMATIC OPERATION

After waterfree cartridge has been installed and the battery has been connected, the Hybrid Urinal will begin automatically activating about two times per week (every 72 hours from the time the battery is plugged in).

2. MANUAL OPERATION

The Hybrid Urinal should always be manually activated during regular cartridge changes to confirm operation. To do this, wave your hand underneath the urinal within 2 inches to the sensor (see diagram below). You will hear a "CLICK" of the solenoid followed by approximately 10 seconds of rushing water, a three second pause and another 10 seconds of rushing water flowing through the housing and drain line.

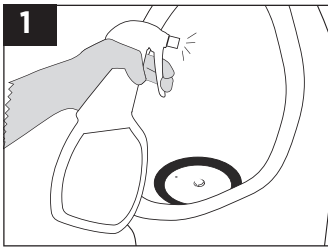


NOTE: After 2 manual activations in a row, there will be a 120 second delay before a third activation can be initiated.

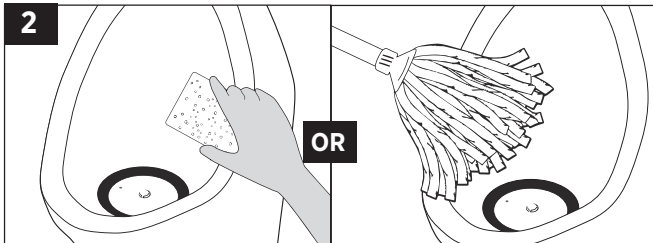
CARTRIDGE REPLACEMENT

The urinal exterior should be cleaned nightly according to the instructions below.

URINAL BOWL CLEANING INSTRUCTIONS



Spray (mist) cleaner on entire bowl.



Clean outside and inside of bowl with rag or sponge. Clean outside and inside of bowl with mop.

Hybrid & Waterfree Urinal Series

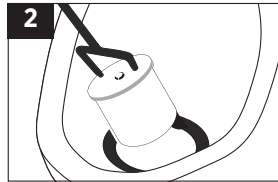
CARTRIDGE REPLACEMENT

The cartridge should be changed according to the instructions below:

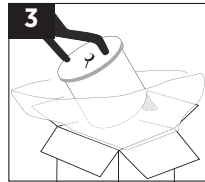
CHANGING THE CARTRIDGE



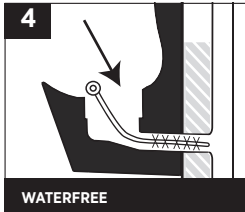
1 Insert Key into cartridge, turn key to left to unlock.



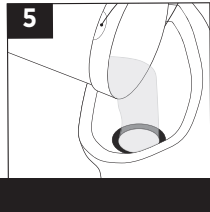
2 Lift and tilt cartridge to drain all free liquids (water, sealant and urine).



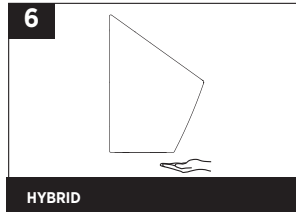
3 Place cartridge into bag, tie bag to seal and dispose.



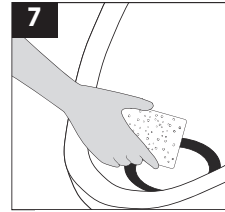
4 Scrub the housing and deep inside of the tail pipe with a long 1.5" diameter nylon brush.



5 Flush housing with 5 gallons (20 Liters) of hot soapy water.



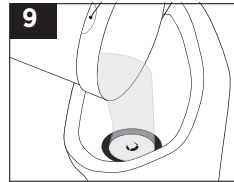
6 Hybrid Urinal Technology should be manually activated each time the cartridge is changed to confirm operation and determine if battery level is sufficient.



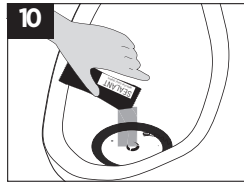
7 Wipe clean inner stainless steel rim.



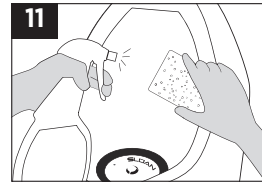
8 Insert new cartridge into housing and turn key to right to lock and click into place.



9 Slowly fill cartridge with 1 quart (1 Liter) or more of clean water until there are no more air bubbles.



10 Add blue sealant (allow time to drain into cartridge).



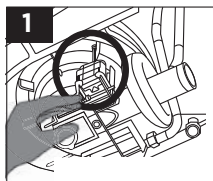
11 Spray (mist) cleaner and wipe clean.

BATTERY REPLACEMENT (Hybrid Urinals Only)

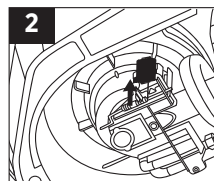
Your battery is a long-lasting lithium and should provide approximately 8 years of operation.

When the battery is low the solenoid will produce an audible chattering sound at the end of activation. This indicates that the battery should be replaced.

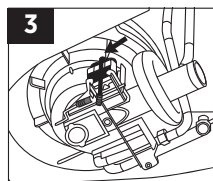
REPLACING THE BATTERY



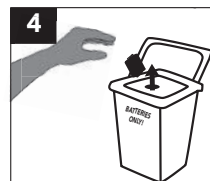
1 Reach underneath the urinal and locate the battery.



2 Remove the battery from the cradle.



3 Unclip the battery from wire and replace with fresh battery.



4 Properly dispose of lithium battery according to local codes.



5 After 1 minute the unit will be ready for operation. Swipe hand within 2 inches of sensor and visually inspect that water flows into housing, ensure cartridge is out of housing for inspection.

Hybrid & Waterfree Urinal Series

TROUBLESHOOTING

1. URINE IS NOT DRAINING OR DRAINING SLOWLY

- Cartridge is full, replace with new cartridge according to instructions inside box.
- Cartridge is not fully locked into place. Sloan logo should be at the 12:00 position when facing the urinal. Use cartridge tool to rotate clockwise until fully seated.
- Improper drain line slope:
 - Tube-in-tube is not installed correctly. Remove urinal from wall and check that arrow tab on black rubber drain tube is at the 12:00 position. Rotate accordingly.
 - Drain line is not pitched correctly. Use standard mending plate to correct drain line pitch. NOTE: Adjustment and re-installation of the urinal hanger bracket may be required to allow the housing drain tail pipe to properly fit into drain line.
 - Housing and/or drain line is clogged. Scrub housing with nylon brush and flush with soapy water according to cartridge replacement instructions.

2. URINE IS ON THE FLOOR/LEAKING

- The hose clamp on the drain is not tightened adequately. Tighten the hose clamp until leak stops.
- Housing is loose. (Hybrid Urinals only) Remove the screw on bottom of electronic board, unclip the electronic board from the bottom of the housing. Lower the electronic board down and out of the way. Unsnap the housing exit tube and use special tool to tighten housing.
- Housing is cracked, urinal bracket is too low placing load onto housing tail pipe inside drain.
 - Raise hanger bracket as necessary to provide concentric insertion of tail pipe into drain line.
 - Replace broken housing.
 - Reinstall urinal according to installation instructions (www.sloanvalve.com).

3. THERE IS A FOUL ODOR COMING FROM THE URINAL

- Cartridge sealant is not present. Dip a rolled up corner of paper towel into the opening at the top of the cartridge. If the paper towel comes out clean or without blue sealant, change the cartridge.
- Odor not coming from urinal. Check other sources of odor such as air vents, toilets, trash receptacles or floor drains. For an extensive list of alternate restroom odor sources please visit www.sloanvalve.com.
- The gear clamp on the drain is not tightened adequately. Tighten clamp.

4. WATER IS ON FLOOR/LEAKING (Hybrid Urinals only)

- Loose supply stop connection. Tighten compression nut on hose.
- Loose 'loop' connection to housing. Check connections and tighten. Lubricate O-Ring at connection.
- Broken air gap assembly. Replace air gap assembly.

5. URINAL DOES NOT DELIVER ANY WATER WHEN SENSOR IS ACTIVATED (Hybrid Urinals only)

INDICATOR: Solenoid valve produces audible "CLICK."

- Water supply stop(s) closed. Ensure water supply stop is open.
- Solenoid strainer clogged. Remove braided hose from solenoid, clean strainer and replace.

INDICATOR: Solenoid valve DOES NOT produce an audible "CLICK."

- Battery low. Replace battery (refer to Battery Replacement section).
- Electronic board assembly is defective. Replace board.

6. URINAL DELIVERS ONLY A SLOW FLOW OR DRIBBLE WHEN SENSOR IS ACTIVATED (Hybrid Urinals only)

- Water supply stop is partially closed. Completely open water supply stop.
- Solenoid strainer is clogged. Remove braided hose from solenoid, clean strainer and replace.

7. URINAL DOES NOT STOP DELIVERING WATER OR CONTINUES TO RUN AFTER ACTIVATION IS COMPLETE (Hybrid Urinals only)

- Urinal is not working properly:
 - Board needs to be reset. Turn off the water at the stop. Unplug battery. Wait 10 seconds and replace battery. Replace battery. After 1 minute unit should cycle properly.
 - If board reset does not work, contact Sloan Technical Support.

Hybrid & Waterfree Urinal Series

TROUBLESHOOTING GUIDE

1. Water DOES NOT shut off in urinal.

- A. Malfunctioning flushometer.
Contact Sloan Technical Support at
1-888-SLOAN-14 (1-888-756-2614).
- B. Supply pressure too low. Minimum flowing pressure must be 25 PSI.
Adjust supply pressure.

2. Water is leaking from edge of urinal on wall.

- A. Urinal is not properly mounted on wall. Tighten urinal mount nuts.
- B. Urinal is not properly mounted on wall. Replace wall gasket seal between wall and urinal.

3. Urinal emits odor.

- A. Plugged vent line. Remove or clear obstruction in vent line.

4. Poor or sluggish flush.

- A. Supply pressure too low. Water supply must be able to provide 18 gpm at 25 psi.
- B. Partially clogged trapway and/or drain pipe and/or vent. Remove or clear obstruction in vent line.

IMPORTANT INFORMATION

1. **DO NOT USE** harsh or caustic chemicals such as drain opening types in this system. These products will damage the vitreous finish.
2. **DO NOT** permit foreign objects (i.e., paper towels, cigarette butts, etc.) to be flushed through the urinal.
3. The urinal must be regularly cleaned. See CARE AND CLEANING for details.

CARE AND CLEANING

Sloan's urinals should be cleaned regularly for maximum sanitary and operational performance. As with any plumbing product consistency is important to achieve efficiency and general cleanliness. Before you begin to clean a urinal, gather all the needed materials including personal protection equipment, such as gloves and eyewear.

What You'll Need:

Goggles/safety glasses
Brush
Gloves
Cleanser for inside the urinal
Cleanser for outside the urinal
Paper towels or cloth
Urinal Screen:

Prior to cleaning, remove urinal screen. After cleaning place screen back in urinal or replace with new screen.

Inside Urinal:

Add your choice of powder, liquid or gel cleanser to the urinal*. Try to apply the cleaner as close to the urinal surface as possible to prevent backsplash. Begin cleaning the urinal from the top down. Always begin scrubbing from the top of the urinal. Look under the rim to get all the stains and grime scrubbed away. Next scrub the urinal. Finally scrub the drain at the bottom of the urinal. Flush the urinal.

Outside Urinal:

Using a disinfectant/detergent cleaner, mixed either in a spray bottle or in a bucket (according to label instructions), spray or wipe down all the hard surfaces outside of the urinal paying close attention to high touch areas like the urinal edge and flushometer. **NOTE: DO NOT use abrasive or chemical cleaners (including chlorine) to clean flushometers that may dull the luster and attack the chrome or special decorative finishes. Use ONLY mild soap and water, then wipe dry with a clean towel or cloth. If cleaning the fixture with an abrasive or chemical cleaner protect the flushometer from any splattering of cleaner. Acids and cleaning fluids will discolor or remove the finish.** The urinal edge rim should never be neglected. It is the part of the urinal that comes into actual contact with people, and it needs to be cleaned thoroughly. Spray inside the urinal and the rim of the urinal with cleanser. Wipe down the urinal.

Wipe Up Spills:

Wipe up any spills that may have splashed or occurred during cleaning.

Service Tip:

Checking for water leaks around toilet fixtures can be difficult to locate the source. Place paper towels around suspected area. It is best to start at the top of the fixture since gravity will cause the water leak to run downward.

When assistance is required, please contact Sloan Technical Support at: 1-888-SLOAN-14 (1-888-756-2614).

*Consult your local janitorial supply to advise best cleansers to use for local water types. Always use cleaners according to their instructions.